

FO2200-8-M

Fiberglass Omni Antenna

Technical Sheet

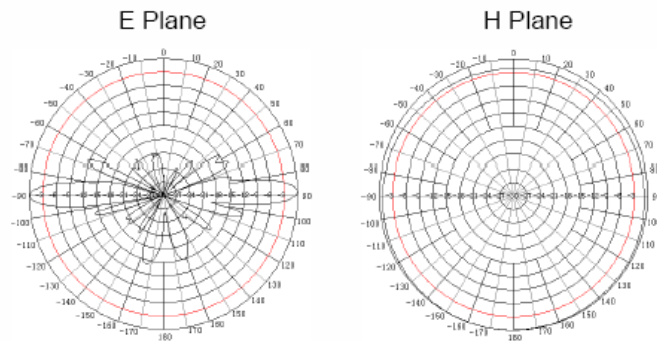


Applications

- 2.1-2.3GHz Band
- 2.1-2.3GHz Microwave transmission system base stations
- Point to multipoint

Features

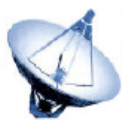
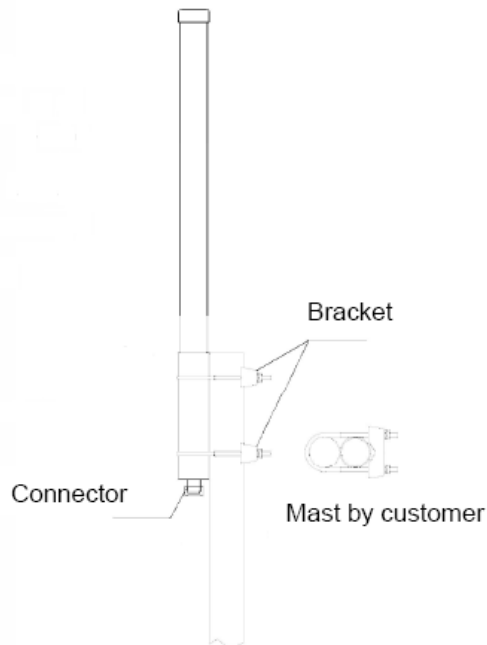
- High Gain, Low VSWR
- High Quality fiberglass radome
- Steel mounting kits
- Mast mount
- Integral N Female Connector



Specifications

Model	FO2200-8-M
Freq.Range-MHz	2100~2410
Bandwidth-MHz	310
Gain	8 dBi
Ver.Beamwidth	9°
VSWR	≤1.5
Impedance-Ω	50
Polarization	Vertical
Max.Power	100W
Connector	N Female
Dimension-	2.32 In × 44 In
Radome material	Fiberglass
Mounting way	Mast
Mast Diameter	1.57~2.75 In
Weight	313lb (Without bracket)
Rated Wind Velocity	135 MPH

Installation Sketch



Antenna Factory, Inc.

www.antennafactory.com
Toll Free: 877-288-9112 Fax: 847-584-9952